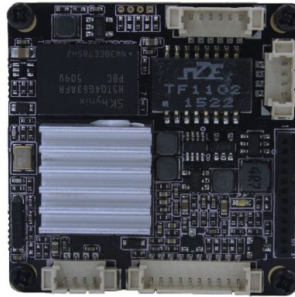
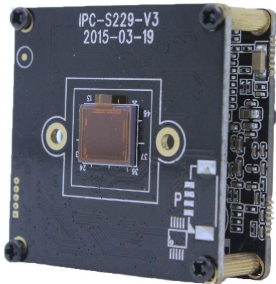


# S220H16D-L26

## 2.0 megapixel WDR 2 Boards IP Camera Module, Hi3516D + PANASONIC 34220 CMOS

1/3" 2.0 Megapixels Progressive Scan Panasonic 34220 CMOS, Hisilicon Hi3516D Chipset, the highest resolution of 1920\*1080, 0.05 Lux@F1.2 (color), 0.01 Lux@F1.2 (black and white);38X38mm 2 boards ; RS485,Optional Motorized lens, IR - CUT (day/night), adapt Bullet, Dome;H.264 or H.265 video coding, double stream, ONVIF 2.4, be compatible many NVR and platform management software.



## Features

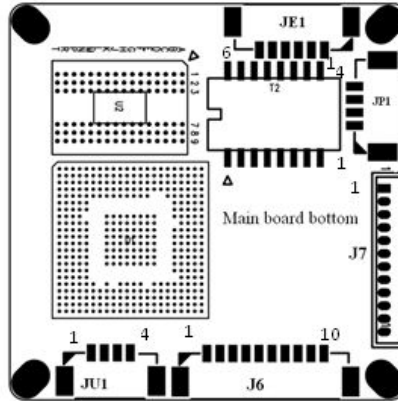
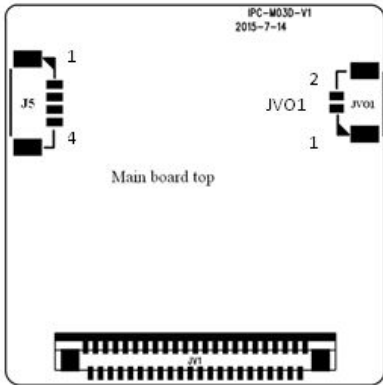
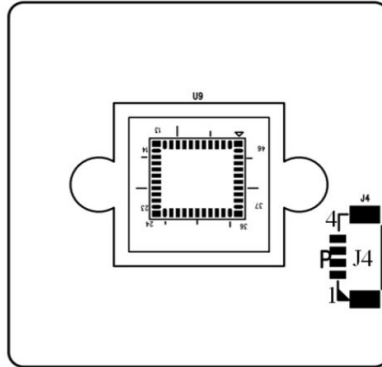
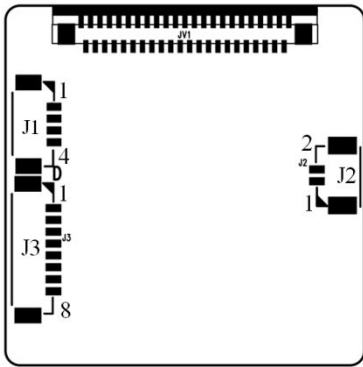
- > Hisilicon Hi3516D
- > 1/3" 2.0 Megapixels Progressive Scan Panasonic 34220 CMOS
- > Max 25/30fps@2.0 Megapixels (1920\*1080)
- > H.264/H.265 & MJPEG dual-stream encoding
- > WDR> 120dB,Support High Light Compensation(HLC)
- > Privacy Mask, Motion Detection
- > Support Onvif 2.4 protocol

## Specifications

<b>Model</b>	S220H16D-L26
<b>Camera</b>	
Image Sensor	1/3" 2.0 megapixels Progressive Panasonic 34220 CMOS
CPU	Hisilicon 3516D
Effective Pixels	1920(H)*1080(V)
Scanning System	Progressive
Electronic Shutter Speed	Auto (1/25 ~ 1/10000s)
Min. Illumination	0.05 Lux@F1.2 (color), 0.01 Lux@F1.2 (black and white)
S/N Ratio	≥50db(AGC OFF)
<b>Camera Features</b>	
Day/Night	Auto(ICR)/Color/B/W
WDR	> 120dB
White Balance	Auto
Gain Control	Auto
Noise Reduction	3D
Privacy Masking	Up to 4 areas
<b>Video</b>	

Compression	H.264/MJPEG/H.265	
Resolution	1080P(1920*1080)/720P(1280*720)/D1(704*576)/VGA(640*480)/QVGA(320*240)	
Frame Rate	Main Stream	1920*1080(1 ~ 25/30fps), 1280*720(1 ~ 25/30fps)
	Sub Stream	D1/VGA/QVGA(1 ~ 25/30fps)
Bit Rate	32KB ~16Mbps, support VBR, CBR	
Text Overlay	Channel, Date & Time, Bit Rate	
<b>Network</b>		
Data Storage	Video record, Picture format	
Trigger	Manual, Automatic(motion detection, alarm, schedule, cycle )	
Alarm data transmission	FTP, E-mail, Browser, CMS	
Protocol	TCP/IP、UDP、RTP、RTSP、RTCP、HTTP、DNS、DDNS、DHCP、FTP、NTP、PPPOE、SMTP、UPNP	
ONVIF	ONVIF 2.4	
Max. User Access	8 users, IE, Google, Firefox	
Smart Phone	Windows Mobile, iPhone, iPad, Android	
<b>Auxiliary Interface</b>		
Audio in	Support	
Audio out	Support	
BNC Video out	Support	
RS422/RS485	Support	
USB	Support (32G USB flash)	
Alarm in	Support	
Alarm out	N/A	
IO Interface	Support	
<b>General</b>		
Power Supply	DC12V / PoE (802.3af)	
Power Consumption	<3W	
Working Environment	-20°C~+55°C , Less than 90% RH	
Dimensions	38 x 38 x 20mm	
Weight	0.15kg	

## Connector



**JP1 Power Supply Connector**

1	DC12V
2	CMT_R
3	CMT_T
4	GND

**JE1 Network Connector**

1	RJ45_1
2	RJ45_2
3	RJ45_3
4	RJ45_6
5	Network Connected Light (Green light)
6	Network Status Light (Yellow light)

**J1 IR-cut Connector**

1	IR-CUT Control Signal5V
2	IR-CUT Control Signal5V

**J2 DC Auto-iris Connector**

1	Drive -
2	Damp-
3	Damp+
4	Drive +

**J3 Motorized Lens Connector (For AZ Series and lens YT2812FB.ICR-J-6)**

1	Focus A-
2	Focus A+
3	Zoom A-
4	Zoom A+

5	Zoom B+
6	Zoom B-
7	Focus B-
8	Focus B+
<b>J4 P-Iris Connector</b>	
1	IRIS A-
2	IRIS B+
3	IRIS A+
4	IRIS B-
<b>J5 IR Light Board Connector</b>	
1	IR Light Board Power Supply (12V)
2	GND
3	IR Feedback Signal Input (0.8V-12V)
4	IC PWM Control
<b>JVO1 BNC Video out</b>	
1	BNC Video out
2	GND
<b>J6 Functions Connector</b>	
1	Audio In (MIC/ Line )
2	GND (Audio)
3	Audio Out
4	GND
5	Reset
6	Alarm In
7	NULL
8	NULL
9	RS_485+
10	RS_485-
<b>JU1</b>	
1	GND
2	USB_DP
3	USB_DM
4	5V Power Supply